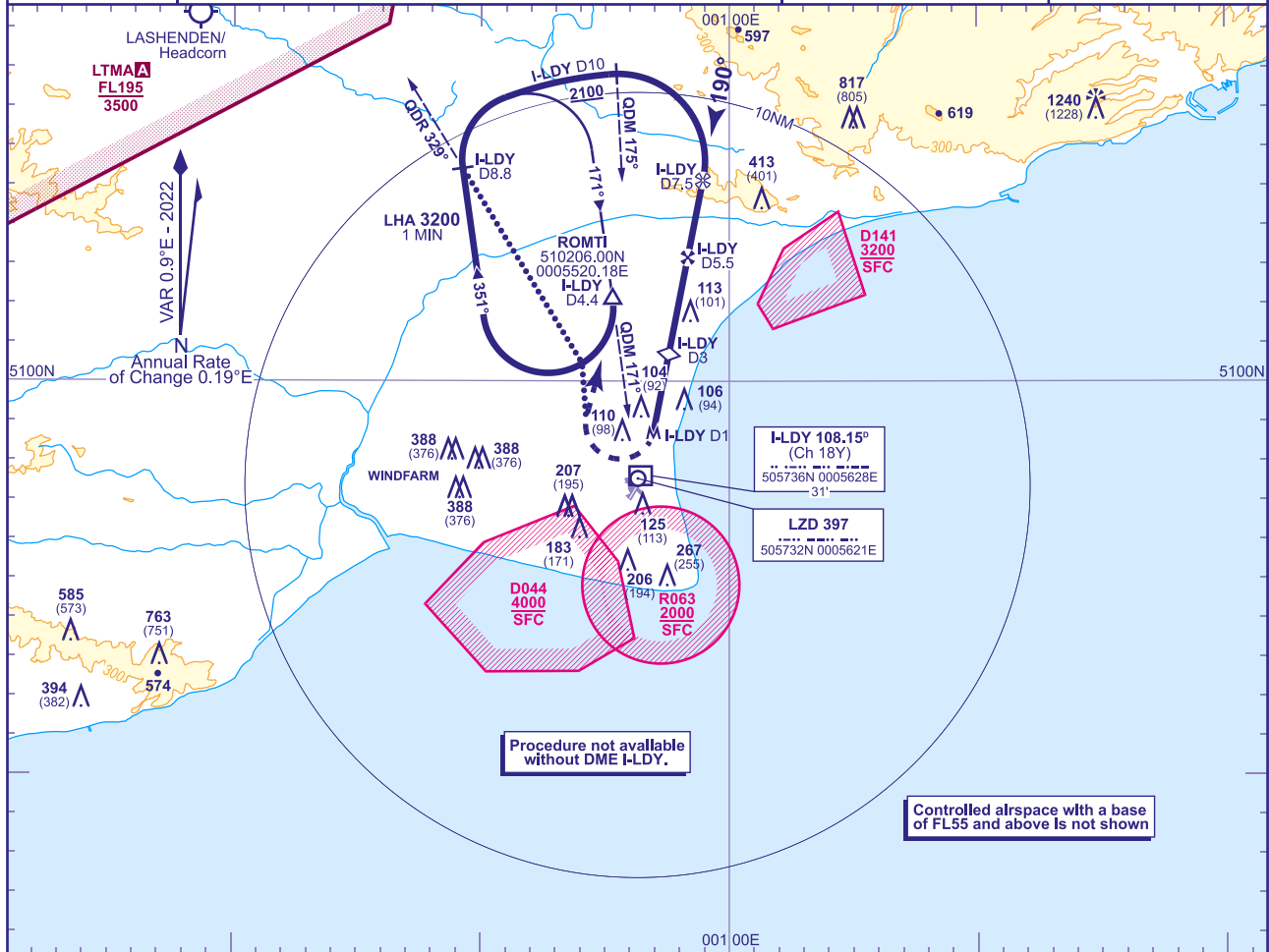


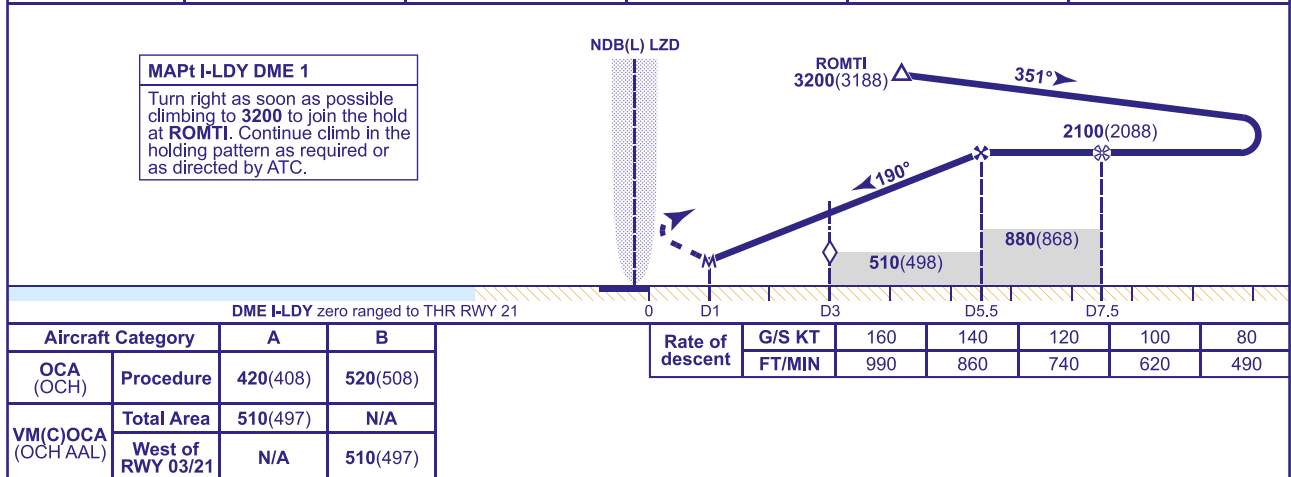
INSTRUMENT APPROACH CHART - ICAO

LYDD
NDB(L) DME
RWY 21
(ACFT CAT A,B)

	APP 120.705	LYDD APPROACH	AD ELEVATION 13
	TWR 119.380	LYDD TOWER	THR ELEVATION 12
	ATIS 129.230	LYDD INFORMATION	OBSTACLE ELEVATION 1240 AMSL (1228) (ABOVE THR)
			BEARINGS ARE MAGNETIC
			TRANSITION ALTITUDE 6000



RECOMMENDED PROFILE Gradient 6.10%, 371FT/NM					
NM	5	4	3 (SDF)	2	1
ALT(HGT)	1910(1898)	1540(1528)	1170(1158)	800(788)	430(418)



ALTERNATIVE PROCEDURE (Subject to ATC approval) At the MAPt turn right onto track 359°, climbing to **2100**(2088), to intercept NDB(L) LZD QDR 329° outbound. At I-LDY DME 8.8 turn right to intercept the DME 10 arc clockwise at **2100**(2088), then continue as for basic procedure.

NOTE 1 When joining the hold at **3200** pilots are to remain clear of EGD044 to the south of the hold when active up to **4000**.
2 A/C to remain clear of EGD141 on approach and EGD044 on MAP.
3 FAT is offset 22° from RWY 21 C/L.

CHANGE (7/25): SPECIFICATION CHANGE.
AERO INFO DATE 30 APR 25
AD 2-EGMD-8-5